



Audi
Genuine Accessories



Audi Entertainment mobile

DVD player

Operating instructions 



CONTENTS

GENERAL INFORMATION	4
Safety information	4
Precautions to be taken when using the DVD player	4
Advice on handling the discs	5
SCOPE OF SUPPLY	5
CONTROLS ON THE PLAYER.....	6
Front face with control panel	6
Left and right sides	7
THE REMOTE CONTROL	8
Remote control buttons	8
Notes on using the remote control.....	9
Inserting or replacing the battery.....	9
INITIAL OPERATION	10
Switching the player ON / OFF	10
Standby mode	10
Day-night brightness adjustment	10
DISC PLAYBACK.....	11
Inserting disc and playing back.....	11
Interrupting / resuming playback	11
Fast forwarding / rewinding.....	12
Jumping to previous / next section.....	12
Calling up the DVD menu and navigation	12
Changing the sound playback language	12
Calling up information on the disc.....	13
Ejecting the disc.....	13
PLAYING BACK AUDIO TITLES, IMAGES AND VIDEOS FROM DATA CDS.....	13
Displaying the contents.....	13
Switching selection	14
Playing back content.....	14
Characteristics of individual file types.....	14
PLAYING BACK USBs AND MEMORY CARDS	15
Inserting the memory medium and playing back files.....	15
Switching between several memory media.....	15



USING BLUETOOTH HEADPHONES	16
Establishing a headphone connection.....	16
Severing the Bluetooth connection	16
USING BLUETOOTH CAR RADIO	17
Establishing a Car Radio connection	17
OTHER SETTINGS IN THE PLAYER MENU	18
Navigating through the player menu	18
Screen settings.....	18
Settings with connection to an external TV.....	18
Resetting to factory settings	19
Selecting the language.....	19
CONNECTING TO EXTERNAL EQUIPMENT	20
Connecting external equipment for playback.....	20
Playback from external equipment (e.g. games consoles).....	20
Connecting headphones	20
PLAYER MENU - OVERVIEW	21
FAULT CORRECTION	22
TECHNICAL DATA	23
LICENCES AND COPYRIGHT	24



GENERAL INFORMATION

Please familiarise yourself with these installation and operating instructions prior to using the DVD player for the first time. Read and adhere closely to following safety information. Non-compliance with the safety information can cause personal injury and/or damage to the player and will nullify any guarantee claims!

Keep these operating instructions in a safe place for later reference.

Safety information



DANGER! There are dangerous electrical voltages present within the player! **Do not open the casing under any circumstances!** Contact a qualified specialist workshop for any necessary repairs!

The player is to be safeguarded from moisture! Use a soft, dry cloth for cleaning the casing surfaces!

When setting up the player, make sure there is enough space is available for air to circulate around it! The player should **not be operated directly adjacent to heat sources!**

CLASS 1

LASER PRODUCT This equipment contains a laser unit in the DVD drive. The laser unit is designed in such a way that no health hazards arise when used correctly.

Do not open the laser unit under any circumstances!
Laser radiation can cause permanent damage to the eyesight!

Precautions to be taken when using the DVD player



DANGER! Only use the player in the car on the **mount provided**. The player may only be installed and operated in vehicles in such a way that the **driver is not distracted**.

Should **smoke or odour possibly accompanied by unusual operating noises develop**, switch the player off immediately and isolate it from the voltage supply. Do not continue using the player!

Avoid abrupt, jerky movements to the player during disc playback. The discs could otherwise become damaged.



Advice on handling the discs

The player will play single or double-sided DVD video discs as well as standard compact discs (12 cm diameter discs). Discs with special formats or 8 cm diameter CDs are not suitable for playback.

Clean soiled discs carefully using first a damp, then a dry cloth. Changes in ambient temperature can cause condensation to form on the disc. Dry the disc before use with a soft cloth.

Avoid touching, writing on or damaging the reverse side of a disc or both sides in the case of double-sided discs. Do not expose the discs to direct sunlight, dust or strong heat. Defective discs can damage the DVD player and may therefore not be used!

SCOPE OF SUPPLY

The following components are included:

- DVD player
- Remote control incl. battery
- Operating instructions (3 languages)

Check the contents upon receipt. Should a component be missing or damaged, contact your dealer for replacement.

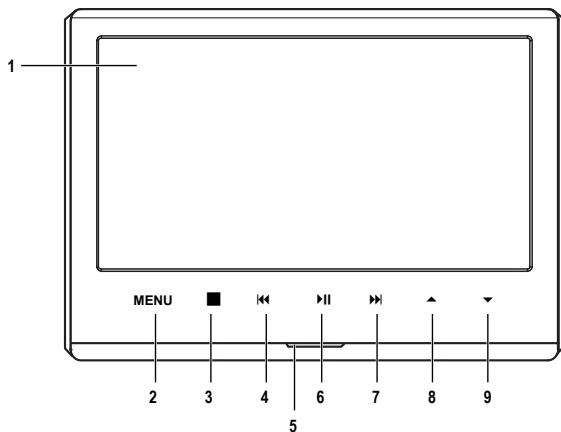








CONTROLS ON THE PLAYER

Front face with control panel

Note

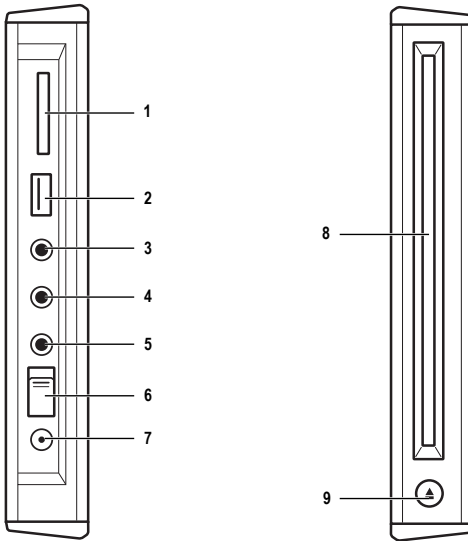
The buttons on the front control panel are lit up after switching on. They react to a single touch.



- | | |
|--|---|
| 1 Display | 6 PLAY / PAUSE  |
| 2 MENU
Calls up the player menu. | Starts / interrupts the playback of a medium. Also serves to confirm the current selection in the menu display. Holding down switches to or out of standby mode. |
| 3 STOP  | 7 NEXT CLIP  |
| 4 PREVIOUS CLIP  | Switches to next section / music title / image. Holding down speeds up the playback |
| 5 Day / night sensor as well as sensor for remote control | 8,9 VOLUME CONTROL   |
| | Controls the playback volume. Also serve to navigate up or down the menu. |



Left and right sides



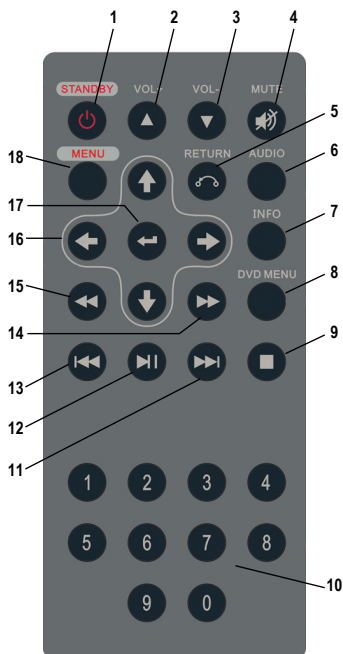
- 1 Slot for SD memory cards.
- 2 **USB socket**
- 3 **VIDEO**
Analogue video input / output.
- 4 **AUDIO**
Analogue audio input / output.
- 5 **Headphone jack**
- 6 **ON / OFF switch**
- 7 **Mains connection socket**
- 8 **DVD drive insert**
- 9 **Eject disc**



THE REMOTE CONTROL

Remote control buttons

- 1 STANDBY**
Switches the player ON / OFF.
- 2,3 VOL+ ▲ / VOL- ▼**
Increases / decreases the volume.
- 4 MUTE**
Switches the speakers ON / OFF.
- 5 RETURN**
Back to previous menu item.
- 6 AUDIO**
Language selection for DVD playback.
- 7 INFO**
Calls up disc information.
- 8 DVD MENU**
Calls up a DVD menu.
- 9 STOP ■**
Pre-stops / stops the playback.
- 10 Numerical entry 0-9.**
- 11 NEXT CLIP ►►**
Switches to next section / music title / image etc.
- 12 PLAY / PAUSE ►►**
Starts / interrupts the playback of a medium
- 13 PREVIOUS CLIP ◄◄**
Switches to previous section / music title / image etc.
- 14 FORWARD ►►**
Fast forward playback.



- 15 REWIND ◄◄**
Fast reverse playback.
- 16 Cursor buttons**
Moves the selection to the left, right, up or down.
- 17 ENTER**
Confirms entries.
- 18 MENU**
Calls up the player menu.



Notes on using the remote control

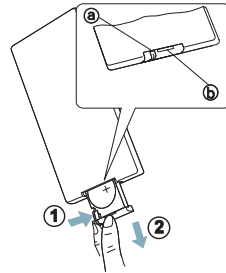
Safeguard the remote control from moisture and mechanical stress such as impacts, twisting etc. which can lead to damage and loss of functionality.

Avoid placing the remote control in bright light. This can likewise lead to functional defects.

Functional limitations can arise if there are obstacles between the remote control and the sensor on the DVD player.

Inserting or replacing the battery

- 1 Push a fingernail into each of the slots in the battery cover.
- 2 Press the battery compartment cover at slot (a) lightly to the side (①) and pull the battery holder at slot (b) out (②).
- 3 Remove the old battery and place a new lithium battery (Cr2025) into the holder. The side of the battery marked + must point upwards.
- 4 Push the battery holder back into the remote control until the holder clicks lightly into place.



INITIAL OPERATION

Switching the player ON / OFF

The DVD player is switched on as follows:

- 1 Push up the **ON / OFF** switch on the left side of the player.
- 2 The "Welcome" screen appears. The controls on the front face light up.

The player is ready for use.

Note

When switching on for the first time or after resetting the player settings, the language selector appears (see "Selecting the language" on page 19).

To switch the player off, push down the **ON / OFF** switch on the left side of the player.

Standby mode

The DVD player automatically switches to the standby mode after a few minutes when there is no playback or operator action. The screen becomes dark and only the **PLAY / PAUSE ▶II** button remains lit up on the front face.

- 1 Press **STANDBY** on the remote control or **PLAY / PAUSE ▶II** for a few seconds on the player to end the standby mode.
- 2 Similarly, the player switches to standby mode if you press **STANDBY** on the remote control when the screen is lit up or **PLAY / PAUSE ▶II** on the player for a few seconds.

Day–night brightness adjustment

A day–night sensor is built into the front face of the player. This provides automatic adjustment of the screen brightness to the ambient brightness with a delay of around 5 seconds.



DISC PLAYBACK

Inserting disc and playing back

Note

Check the condition of each disc before inserting! Do not use any deformed or otherwise damaged data carriers!

Insert single-sided discs with the printed side to the front. Check both sides of a double-sided disc then insert it correctly into the drive.

- 1 Check that the DVD player is ready for operation or in standby mode. If not, switch the player on.
- 2 When you push the disc into the opening in the DVD drive it will be drawn in automatically. The player reads the information on the disc. On the screen will appear DVD, VCD or CD, depending on disc type.
- 3 Playback normally starts automatically, the disc menu (where available) appears in the display. If not, press **PLAY / PAUSE ▶II** at the control panel or on the remote control.

Note

When an audio disc is playing back, the screen display ends automatically if no buttons are pressed for about 1 minute. Pressing any random button reactivates the display.

Interrupting / resuming playback

- 1 To interrupt the playback with freeze-frame, press **PLAY / PAUSE ▶II** once.
- 2 To interrupt the playback without freeze-frame, press **STOP ■** once (pre-stop).
- 3 To resume the playback press **PLAY / PAUSE ▶II** again.
With most DVDs and video CDs the playback will restart at the point at which it was stopped. By ejecting the disc or pressing **STOP ■** again, this resume function is deactivated.

Fast forwarding / rewinding

- 1 During playback, press one of the **FORWARD** ►► or **REWIND** ◀◀ buttons on the remote control or press and hold one of the ◀◀ or ►► buttons on the player.
- 2 The speed of the playback alters with each press of the button to 2x, 4x, 8x, 20x and again to 1x.
- 3 Pressing **PLAY / PAUSE** ►|| also leads to playback at normal speed.

Jumping to previous / next section

- 1 During playback press one of the ◀◀ or ►► buttons to jump to the previous / next section.

Calling up the DVD menu and navigation

Most DVDs as well as video CDs with playback control (PBC) have a menu for selecting individual video sequences. This menu can be activated during playback by pressing **DVD MENU** on the remote control or by selecting the menu item **DVD Option - Disc Menu**.

- 1 Navigate DVDs by using the cursor buttons on the remote control or the ◀◀ and ►► or ▲ and ▼ buttons to get to the desired item and start the playback with **PLAY / PAUSE** ►||.
- 2 For video CDs with PBC, use the numerical buttons on the remote control to select an item.

Note

Video CD playback can also be effected without calling up the disc menu. By pressing the number 1 on the remote control while the playback is stopped, track 1 on the disc will be played.

Changing the sound playback language

- 1 By pressing the **AUDIO** button on the remote control or by calling up the menu item **DVD Option - Audio** during the playback, you can choose between the different sound tracks offered – depending on the facilities on the DVD / CD.



Calling up information on the disc

This function enables you to display general information on the disc such as playing time, number of sections or title.

- 1 Press the **INFO** button on the remote control during playback or select the menu item **DVD Option - Information**. The information is shown in the upper part of the display.
- 2 Repeated pressing of the **INFO** button scrolls through the available information and ultimately fades this out.

Ejecting the disc




- 1 Press the **Disc eject** button on the right side of the player. Any playback still running is stopped, the disc is ejected about half way.
- 2 Remove the disc completely from the drive.

PLAYING BACK AUDIO TITLES, IMAGES AND VIDEOS FROM DATA CDS

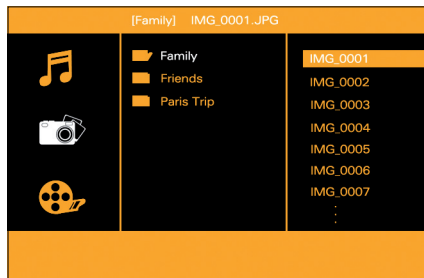
Displaying the contents

After inserting a disc which contains audio, image and/or video files, the player reads the information on the media content and displays this on the screen in three columns.

The left column displays icons for the respective mode:

-  Music
-  Photos
-  Videos

Recognized folders and files are listed in the middle and right hand columns.



The currently selected mode, the current folder or the current file is highlighted white. The current selection is symbolised by an orange bar.

Switching selection

- 1 Move the bar up or down within a column by pressing **Cursor up/down** on the remote control or the **▲** or **▼** button.
- 2 To open a folder, press a **PLAY / PAUSE ▶||** button. The button switches to the right hand column.
- 3 To return to the next highest folder level, press a **STOP ■** button.


Playing back content

- 1 If the bar is on an audio, image or video file, start the playback by pressing the **PLAY / PAUSE ▶||** button.
- 2 If there are several media files located within the current folder, these will be played back sequentially.
- 3 During playback you can:
 - switch to the previous or next file with **◀◀** or **▶▶**,
 - pause or resume the playback with **PLAY / PAUSE ▶||**.
- 4 To end the playback, press **STOP ■**. The folder structure returns to the display.

Characteristics of individual file types

The display on the screen can change depending on media type:

- With music files, you will see additional information in the lower part of the screen (where available).

File no./ total	File name	Played
 0002/0004 Tina Turner It Takes Two simply the best	It Takes Two.MP3	00:00:00

You will find a list of playable file formats in section "Technical data" on page 23.



PLAYING BACK USBS AND MEMORY CARDS

Inserting the memory medium and playing back files

- 1 Insert the USB memory stick or memory card into the corresponding connection socket on the left side of the player (see section "Left and right sides" on page 7).
- 2 The contents of the memory media are read and displayed as described in section "Playing back audio titles, images and videos from data CDs" on page 13.
- 3 To play back the contents, proceed as described in section "Playing back content" on page 14.

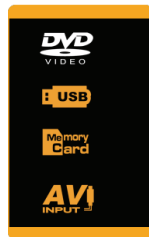
Note

Connection via a USB cable or using memory cards of inferior quality can have a negative effect on the application.

Switching between several memory media

If several data carriers are inserted or connected into the player, the playback can be switched between them as follows:

- 1 Press **MENU** on the player or remote control. The player menu is shown.
- 2 Confirm the current selection **mode** by pressing **PLAY / PAUSE ▶||** on the player or **RETURN** on the remote control.
- 3 The sub-menu appears for selecting the data source. The symbol for the current data source is highlighted white.
- 4 Move the selection to the desired item by pressing **Cursor up/down** on the remote control or **▲** or **▼**.
- 5 Confirm the selection by pressing **PLAY / PAUSE ▶||** on the player or **ENTER** on the remote control.




The information on the selected data carrier is read by the player and displayed or the playback starts automatically.

USING BLUETOOTH HEADPHONES


Establishing a headphone connection

Sound from the player can also be transmitted to a Bluetooth headphone via a Bluetooth connection. It is necessary to proceed as follows when connecting for the first time:

- 1 Take the headphones out of the case.
- 2 Switch the headphones on by pressing and holding the symbol  on the phone designated "R". The green LED on the phone starts to flash.

Note

If the LED doesn't flash, replace the batteries or charge them up via the USB connection. More detailed information can be found on this in the headphone' user information.


- 3 In the player menu, select **Bluetooth - Pair headphone**. In the left upper corner of the display a white flashing Bluetooth symbol  appears.
- 4 The player and headphones are creating a connection. This can take a few seconds. After successful connection, the colour of the Bluetooth symbol changes to blue.
- 5 Close the player menu. The Bluetooth symbol will also be faded out.

Note

If the headphones have previously been connected with the DVD player then they will recognize the player and connect automatically every time the DVD player and headphones are switched on.

Severing the Bluetooth connection

Should you wish to sever the connection, there are the following options:

- 1 Switch off the headphones by pressing and holding on the symbol  on the side designated "R". The green LED on the phone goes out and the sound is played back via the player.
- 2 In the player menu, select **Bluetooth - Bluetooth OFF**.



USING BLUETOOTH CAR RADIO

Establishing a Car Radio connection

Music from the player can also be transmitted to the car radio via a Bluetooth connection. It is necessary to proceed as follows when connecting for the first time:

- 1 Check your Car Radio manual how to connect a new device. Prepare the Car Radio to look for Bluetooth connection.
- 2 In the player menu, select **Bluetooth – Pair Car Radio**. In the left upper corner of the display a white flashing Bluetooth symbol appears.
- 3 When the Car Radio requests a PIN code for this connection enter "0000".
- 4 The player and Car Radio are creating a connection. This can take a few seconds. After successful connection, the colour of the Bluetooth symbol changes to blue.
- 5 Close the player menu. The Bluetooth symbol will also be faded out.

Note

If the Car Radio has previously been connected with the DVD player then it will recognize the player and connect automatically.



OTHER SETTINGS IN THE PLAYER MENU

Navigating through the player menu

You can use the following buttons for calling up and navigating through the player menu.

Action	Button on the player	Button on the remote control
Calling up the menu	MENU	MENU
Up in menu level	▲	Cursor up
Down in menu level	▼	Cursor down
Confirm selection	▶	ENTER
Back to previous menu	■	RETURN
Quit menu	MENU	MENU

Screen settings

The following monitor parameters can be set in the menu item **Display**:

- **Brightness**: automatic or manual, on a scale from 0 to 8.
With "Automatic" the screen brightness adapts itself automatically to the ambient brightness (see "Day-night brightness adjustment" on page 10).
- **Color**: manual, on a scale from 0 to 8.
- **Proportion**: switch between width-to-height ratios 16:9 and 4:3.

Settings with connection to an external TV.

When you connect the DVD player to an external TV, you can make the appropriate settings in the menu item **Setup** depending on its data:

- **TV System**: automatic – for multi-standard TVs, e.g. NTSC or PAL
Specification is automatic.
- **TV Type**: setting the width-to-height ratio – 16:9, 4:3 letterbox (films are played back in the original width-to-height ratio, black bars may appear above and below), 4:3 pan & scan (films fill the entire TV screen, may be partially cut off at the sides), 2.35:1.



Resetting to factory settings

By selecting the menu item **Setup - Default**, all manual configuration changes to the DVD player are erased and returned to the factory settings.

Note

Thereafter, the language selection list appears on the screen.

Selecting the language

The player menu is available in the following languages:

English, German, Spanish, French, Italian, Russian, Swedish, Dutch, Japanese and Chinese.

The language can be selected in the menu item **Language** (see "Player menu - overview" on page 21).



CONNECTING TO EXTERNAL EQUIPMENT

Attention

Before connecting, switch off the power supply to the DVD player and the external equipment!


Connecting external equipment for playback

You can transmit the sound or image and sound signal from the DVD player to external equipment such as a TV or amplifier. To do this, proceed as follows:

- 1 Connect the socket(s) **AUDIO** or **VIDEO** on the DVD player (see "Left and right sides" on page 7) via the appropriate audio or video cable with the input socket(s) on the external equipment.
- 2 Switch both the player and the external equipment on. Select the required input or channel on the external equipment.
- 3 Start the media playback on the DVD player.

Playback from external equipment (e.g. games consoles)

You can transmit sound or image and sound signal from external playback equipment to the DVD player. To do this, proceed as follows:

- 1 Connect the socket(s) **AUDIO** or **VIDEO** on the DVD player (see "Left and right sides" on page 7) via the appropriate audio or video cable with the output socket(s) on the external equipment.
- 2 Switch both the player and the external equipment on. In the DVD player menu, select **Mode - AV IN SIDE** .
- 3 Start the media playback on the external equipment.

Connecting headphones

- 1 Turn the volume on the DVD player down to minimum.
- 2 Plug the headphones into the 'phone jack on the DVD player (see "Left and right sides" on page 7).
- 3 Put the headphones on and turn the volume up to a comfortable level.



PLAYER MENU - OVERVIEW

DVD player overview of menu:

- Mode ----- DVD
 - USB
 - SD
 - AV IN SIDE
- Bluetooth ----- Bluetooth ON
 - Bluetooth OFF
 - Pair Headphone
 - Pair Car Radio
- Display ----- Brightness ----- Auto
 - Manual ----- 0...8
 - Color 0...8
 - Proportion ----- 16:9
 - 4:3
- Setup ----- TV System ----- Auto
 - PAL
 - NTSC
 - TV Type ----- 16:9
 - 4:3 LB
 - 4:3 PS
 - 2.35:1
- Language ----- Default
 - English
 - German
 - Spanish
 - French
 - Italian
 - Russian
 - Swedish
 - Dutch
 - Chinese
 - Japanese
- DVD Option ----- Disc Menu
 - Information
 - Audio
 - Subtitle
 - Repeat

USA



FAULT CORRECTION

Not every fault means the player is defective. The following table lists some faults, possible causes and steps to remedy these.

Symptom	Possible cause	Remedy
Player won't switch on	Player is unplugged from power supply	Check connection to player and that mains plug is seated properly
Remote control not working	Remote control batteries flat Line of influence barred	Replace batteries Test in another location
No sound output	Volume at 0	Turn up volume
	Playback has been interrupted	Resume playback
	Headphones are connected or plugged in	Unplug headphones
No disc playback	Disc incorrectly inserted	Insert disc correctly
	The disc is dirty or damaged	Clean disc carefully
	The disc contains no playable content	
No image and/or sound on the external equipment	Wrong channel or audio input selected at the external equipment	Check setting of the external equipment
	Cable connection loose	Check cable seating



DANGER!

Never attempt to repair the DVD player yourself.

Always contact a qualified repair shop in the following cases:

- The player has come into contact with water.
- The player no longer functions as normal.
- The playback performance and quality are significantly lower than usual.



TECHNICAL DATA

Performance characteristics

- DVD player, code-free, for DVD, VCD, SVCD, CD, DVD+R, DVD-R, DVD+RW, DVD-RW
- Image and video formats: JPEG, MPEG2, DIVX, DAT
- Audio formats: MP2, MP3, DAT
- TV systems: NTSC, PAL
- Integrated stereo loudspeakers, 2 x 1 W
- integrated Bluetooth module

Screen

- Diagonal: 9" (22.8 cm), 800 x 480 pixels, width-to-height ration 16:9
- Brightness: 250 cd/m²
- Contrast: 400:1

Connections

- Headphones, input and output sockets: cinch 3.5 mm plug
- Card reader (SD) and USB port

Dimensions

- Width / height / depth: 240 x 173 x 36.5 mm
- Weight: approx. 920 g

Temperature range

- Operating: -10 ... +50 °C
- Storage: -30 ... +70 °C

Environmental protection

The screen is mercury-free with arsenic-free screen glass and contains no BFRs (brominated flame retardants) or PVC or heavy metals such as Cd, Cr, Hg or Pb, the casing consists of recyclable aluminium.

The player complies with the harmonised European Standards in the versions current at the time of manufacture:

Low voltage 2006/95/EC

Electromagnetic compatibility 2004/108/EC

LICENCES AND COPYRIGHT

MACROVISION:

This product contains a technology for safeguarding copyrights which are protected by US patents and other intellectual property rights. The use of this copyright safeguarding technology must be authorised by Macrovision and is provided for personal use and other limited presentations unless otherwise stated by Macrovision. Reverse engineering or disassembly are not permitted.

DOLBY:

Manufactured under licence from Dolby Laboratories. "Dolby" and the double-D symbol are trademarks of Dolby Laboratories.

DivX:

This equipment contains a copyright safeguarding technology which is protected by DivX, Inc. DivX, DivX Certified and related logos are trademarks of DivX, Inc. and are used within the scope of a licence.

BLUETOOTH:

The name Bluetooth® as well as the Bluetooth brands are the property of Bluetooth SIG Inc. and are used under licence.

All other brand and product names referred to in these operating instructions are trademarks and/or registered trademarks of the respective owner.

We reserve the right to make alterations for reasons of technical advancement. The illustrations and screen displays used in this handbook may deviate from the actual design of the equipment.

This manual is protected by copyright.

Any use without the permission of the author is prohibited.

© Made by Nextbase for Audi Genuine Accessories, issued April 2012